

BROOKLYN WEEKLY LUXURY REPORT

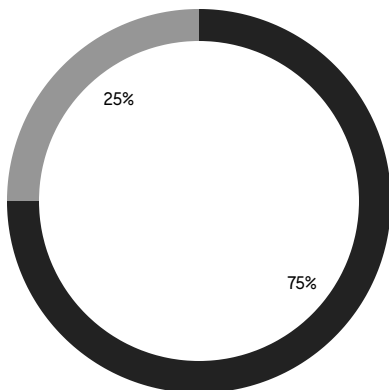


215 EAST 9TH STREET

RESIDENTIAL CONTRACTS
\$2 MILLION AND UP

■ NORTHWEST BROOKLYN

■ EAST BROOKLYN



8

CONTRACTS SIGNED
THIS WEEK

\$23,630,000

TOTAL CONTRACT VOLUME

The Brooklyn luxury real estate market, defined as all properties priced \$2M and above, saw 8 contracts signed this week, made up of 5 condos, 1 co-op, and 2 houses. The previous week saw 10 deals. For more information or data, please reach out to a Compass agent.

\$2,953,750

AVERAGE ASKING PRICE

\$2,847,500

MEDIAN ASKING PRICE

\$1,456

AVERAGE PPSF

0%

AVERAGE DISCOUNT

\$23,630,000

TOTAL VOLUME

318

AVERAGE DAYS ON MARKET

Unit 11B at 50 Bridge Park Drive in Brooklyn Heights entered contract this week, with a last asking price of \$4,500,000. Built in 2019, this condo unit spans 2,057 square feet with 3 beds and 2 full baths. It features panoramic views, a private storage unit, floor-to-ceiling windows and abundant natural lighting, wide-plank oak floors, high ceilings, multi-zone heating and cooling, a windowed open kitchen with pantry, and much more. The building provides a fitness center, a full-time concierge, bike storage, a lounge and cabanas, and many other amenities.

Also signed this week was Unit THC at 168 Plymouth Street in DUMBO, with a last asking price of \$3,460,000. Built in 2019, this condo-style townhouse spans 2,484 square feet with 2 beds and 2 full baths. It features a private entrance, full-wall factory windows, a home office nook, a custom Italian kitchen with high-end appliances and porcelain counters, a primary bedroom with a large walk-in closet and en-suite bath, wide-plank white oak flooring, and much more. The building provides a 24-hour doorman, a lobby lounge, a gym, bike storage, a common roof deck, and many other amenities.

5

CONDO DEAL(S)

1

CO-OP DEAL(S)

2

TOWNHOUSE DEAL(S)

\$3,047,000

AVERAGE ASKING PRICE

\$2,795,000

AVERAGE ASKING PRICE

\$2,800,000

AVERAGE ASKING PRICE

\$2,900,000

MEDIAN ASKING PRICE

\$2,795,000

MEDIAN ASKING PRICE

\$2,800,000

MEDIAN ASKING PRICE

\$1,722

AVERAGE PPSF

\$796

AVERAGE PPSF

1,779

AVERAGE SQFT

3,541

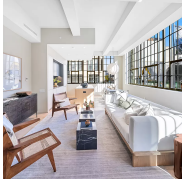
AVERAGE SQFT



50 BRIDGE PARK DR #11B

Brooklyn Heights

TYPE	CONDO	STATUS	CONTRACT	ASK	\$4,500,000	INITIAL	\$4,500,000
SQFT	2,057	PPSF	\$2,188	BEDS	3	BATHS	2.5
FEES	\$6,398	DOM	217				



168 PLYMOUTH ST #THC

Dumbo

TYPE	CONDO	STATUS	CONTRACT	ASK	\$3,460,000	INITIAL	\$3,375,000
SQFT	2,484	PPSF	\$1,393	BEDS	2	BATHS	2.5
FEES	\$5,258	DOM	836				



263 MADISON ST

Bedford Stuyvesant

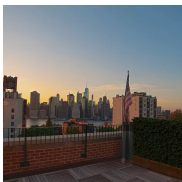
TYPE	TOWNHOUSE	STATUS	CONTRACT	ASK	\$3,150,000	INITIAL	\$3,200,000
SQFT	4,100	PPSF	\$769	BEDS	6	BATHS	7
FEES	\$336	DOM	226				



11 HOYT ST #43F

Downtown Brooklyn

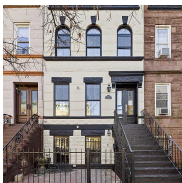
TYPE	CONDO	STATUS	CONTRACT	ASK	\$2,900,000	INITIAL	\$2,900,000
SQFT	1,722	PPSF	\$1,685	BEDS	3	BATHS	3
FEES	\$4,450	DOM	136				



35 PIERREPONT ST #9A

Brooklyn Heights

TYPE	COOP	STATUS	CONTRACT	ASK	\$2,795,000	INITIAL	\$2,795,000
SQFT	1,930	PPSF	\$1,449	BEDS	3	BATHS	3
FEES	N/A	DOM	136				



274 BAINBRIDGE ST

Bedford Stuyvesant

TYPE	TOWNHOUSE	STATUS	CONTRACT	ASK	\$2,450,000	INITIAL	\$2,450,000
SQFT	2,982	PPSF	\$822	BEDS	5	BATHS	3
FEES	\$293	DOM	40				

Compass is a licensed real estate broker and abides by Equal Housing Opportunity laws. All material presented herein is intended for informational purposes only. Information is compiled from sources deemed reliable but is subject to errors, omissions, changes in price, condition, sale, or withdrawal without notice. No statement is made as to the accuracy of any description. All measurements and square footages are approximate. This is not intended to solicit property already listed. Nothing herein shall be construed as legal, accounting or other professional advice outside the realm of real estate brokerage.



9 COLLEGE PL #1F

Brooklyn Heights

TYPE	CONDO	STATUS	CONTRACT	ASK	\$2,250,000	INITIAL	N/A
SQFT	1,415	PPSF	\$1,591	BEDS	2	BATHS	2
FEES	\$3,100	DOM	N/A				



50 BRIDGE PARK DR #15E

Brooklyn Heights

TYPE	CONDO	STATUS	CONTRACT	ASK	\$2,125,000	INITIAL	\$2,125,000
SQFT	1,214	PPSF	\$1,751	BEDS	2	BATHS	2
FEES	\$2,571	DOM	633				

Compass is a licensed real estate broker and abides by Equal Housing Opportunity laws. All material presented herein is intended for informational purposes only. Information is compiled from sources deemed reliable but is subject to errors, omissions, changes in price, condition, sale, or withdrawal without notice. No statement is made as to the accuracy of any description. All measurements and square footages are approximate. This is not intended to solicit property already listed. Nothing herein shall be construed as legal, accounting or other professional advice outside the realm of real estate brokerage.